



132 Symonds St, Auckland.
PO Box 10 015 Dominion Rd,
Auckland 1024

phone: (09) 309 2426
fax: (09) 309 2422
email: cfg@cfgheritage.com

**47A and 47B Huntington Drive:
final report (HNZPTA authority 2020/076)**

**report to
Austin Management Ltd
and
Heritage New Zealand Pouhere Taonga**

Matthew Campbell and Ella Ussher

Contents

Introduction	1
Monitoring	2
Summary	3
References	3

**47A and 47B Huntington Drive:
final report (HNZPTA authority 2020/076)**

**report to
Austin Management Ltd
and
Heritage New Zealand Pouhere Taonga**

Ella Ussher and Matthew Campbell

Introduction

Austin Management Ltd recently completed earthworks for a residential development involving the construction of 36 townhouses at 47A and 47B Huntington Drive (Lots 2 and 3 DP 474573), Huntington Park, Auckland. The development is within and immediately south of the original location of Guy's Homestead, recorded as site R11/2866 in the New Zealand Archaeological Association (NZAA) Site Recording Scheme (SRS), and scheduled as a Category B Historic Heritage Place (#1350) in the Auckland Unitary Plan. An authority to modify or destroy any previously unrecorded archaeological sites in the vicinity of works under section 44 of the Heritage New Zealand Pouhere Taonga Act 2014 was granted for the

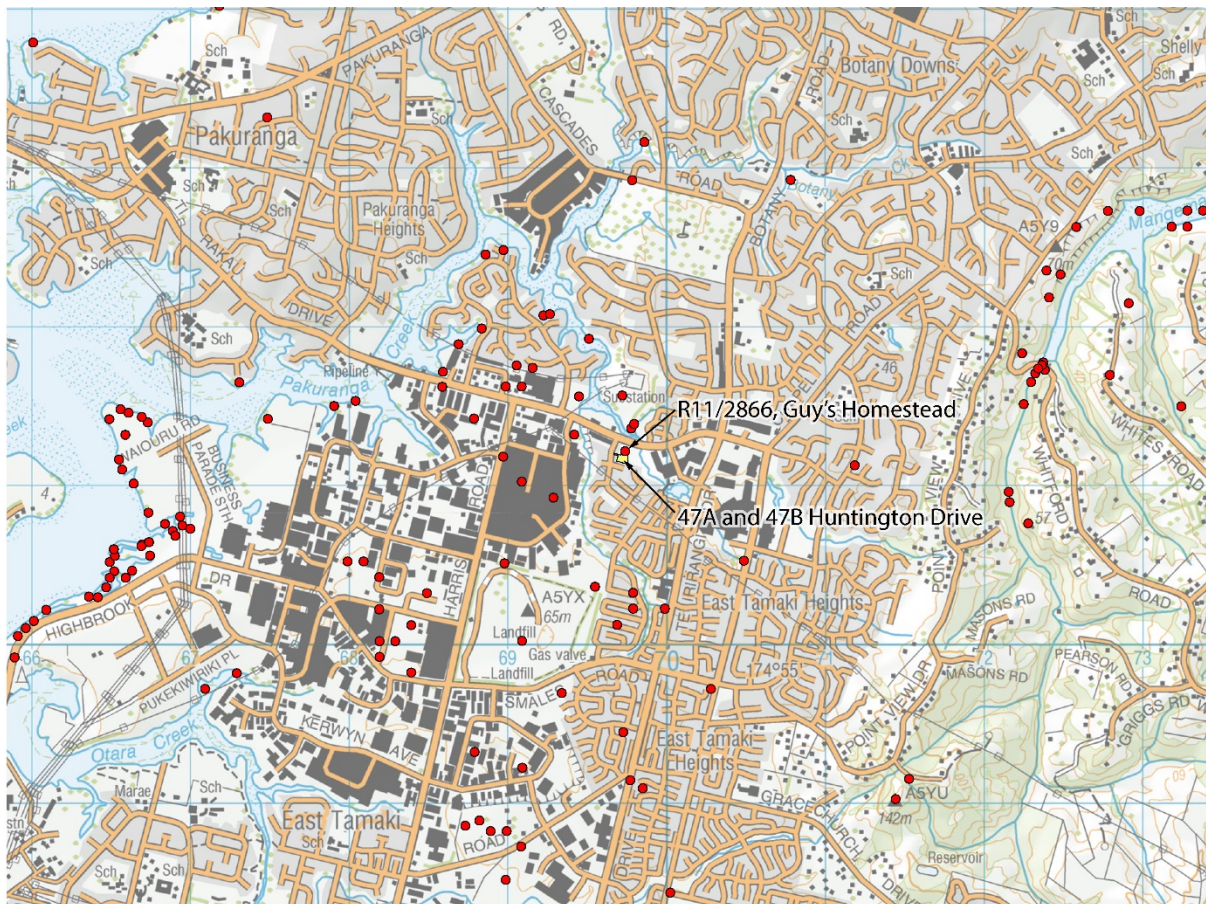


Figure 1. Location of 47 Huntington Drive showing archaeological sites recorded in the area.

works (2020/076). Archaeological works commenced on 22 October 2019 and were completed on 5 November 2019. This report is provided as an interim and final report combined.

Monitoring

Following an archaeological induction carried out by Matthew Campbell, topsoil removal across the entire development area began on the 22 October 2019. This was monitored by Matthew Campbell and Ella Ussher over several weeks. Due to the need to retain topsoil on site, this process was carried out in sections. The first area stripped was the location of Units 23 to 32.. The topsoil in this area was very shallow, underneath which was a thin layer of demolition material including some very fragmented glass, ceramics, bricks, rubber pipes, metal scrap and gravel. There was also a modern rubbish pit with plastic food wrappers in the far south-eastern corner of the development. There were no subsurface features noted below the topsoil and demolition layer within the unmodified clay.

On the same day, the removal of topsoil across the location of Units 7 to 22 and the subsoil removal for the stormwater and wastewater drains to these same houses was monitored. A similar demolition layer was noted across this area, up to 200 mm thick above the unmodified clay. Aerial photographs from 1995 show that the entire backyard and driveway of Guy's Homestead was levelled during the subdivision of the farm on which the homestead was located for large industrial and residential developments. The demolition layer is most likely a result of this process. There were two features noted within the area stripped for the wastewater drain (Figure 4). One of these appeared to be a burned stump, and the other was a post-hole and remaining post. These were both photographed and mapped.

Topsoil was also stripped in the location of Units 1 to 6 and 32 to 36, and stormwater and wastewater drains for these houses, in order to place a temporary site office, toilet and container there. The original location of Guy's Homestead is within this area, and most of this section of the property was excavated and monitored by Clough and Associates under HNZPT Authority 2014/584 (Judge et al. 2017) for the development of the childcare centre now at 47C Huntington Drive. The area has since been heavily modified by levelling with material from the demolition of the southern extension of the Guy's Homestead, and construction base course from the driveway for 47C Huntington Drive. For this reason, there were no in situ features or deposits observed within this area of works.

The demolition subsoil layer was stripped down to the clay for the building platform for Units 7 to 14 on 30 October 2019, monitored by Ella Ussher. Within this area there were a number of square and round post-holes cut into the clay, and a drain feature. These post-holes were half-sectioned and found to be 150mm deep. Likewise, the drain was very shallow, being 150mm at its deepest point. These features all appeared to be filled with the same demolition material observed across the site.

This drain feature was later found to extend in an east-west direction through the building platform for Units 15 to 22, before turning north towards the new driveway. This area was stripped between 30 October and 5 November 2019, and the remaining features were recorded by Ella Ussher. In the southern end of the building platform was a large square

rubbish pit, 1.5m wide x 2m long and 600mm deep (Figure 5). The pit was filled with material from the demolition of the farm sheds that were once located here and are visible in aerial photographs from 1943 to 1988. This material consisted of aged asbestos, wood, corroded metal, rubber pipes, stock tags and other farming items. The presence of asbestos suggest that the sheds were built during the 1930s or 1940s. North of this pit but within the same building platform were at least 16 post-holes (several with intact posts) (Figure 7) and the base of a small concrete structure cut into the unmodified clay. The only remaining portions of this structure were the bases of two walls, one extending east 1.4m and the other north 1.8m and cut 100mm into the unmodified clay (Figure 6). It is likely that the remainder of the structure was demolished when the farm buildings were levelled between 1988 and 1995. The fill of one post-hole in this area had a bottle inside which was stamped with a 1921 date on it, indicating that the post was removed and the hole back-filled after this date (Figure 8).

No features were noted in any of these areas of works that can be positively associated with occupation of the property prior to 1900.

Summary

Although the properties at 47A and 47B Huntington Drive were occupied during the same period as Guy's Homestead no evidence of of occupation prior to 1900 was encountered during this project. The entire area within the residential development has been heavily modified by several phases of construction, including the construction of farm buildings in the 1930s/1940s and demolition of these by 1995. Later, the construction of the childcare centre in 2014 at 47C Huntington Drive (then 415 Ti Rakau Drive) involved the archaeological investigation and demolition of the southern extension and underfloor of Guy's Homestead before removal of the remaining building to a new building platform on that property. A new driveway, carpark and stormwater drain were also constructed as part of that development.

No in situ archaeological material was positively identified during construction so no further analysis is required. This final report has been written to satisfy condition 6 of the authority.

References

Judge, C., G. Farley, Z. Burnett, W. Maguire, and R. Clough. 2017. 415 Ti Rakau Drive, East Tamaki, Auckland: final report on archaeological monitoring and investigation of site R11/2866 (Guy's Homestead). Unpublished Clough and Associates report for 415 Ti Rakau Limited.



Ella Ussher
Archaeologist

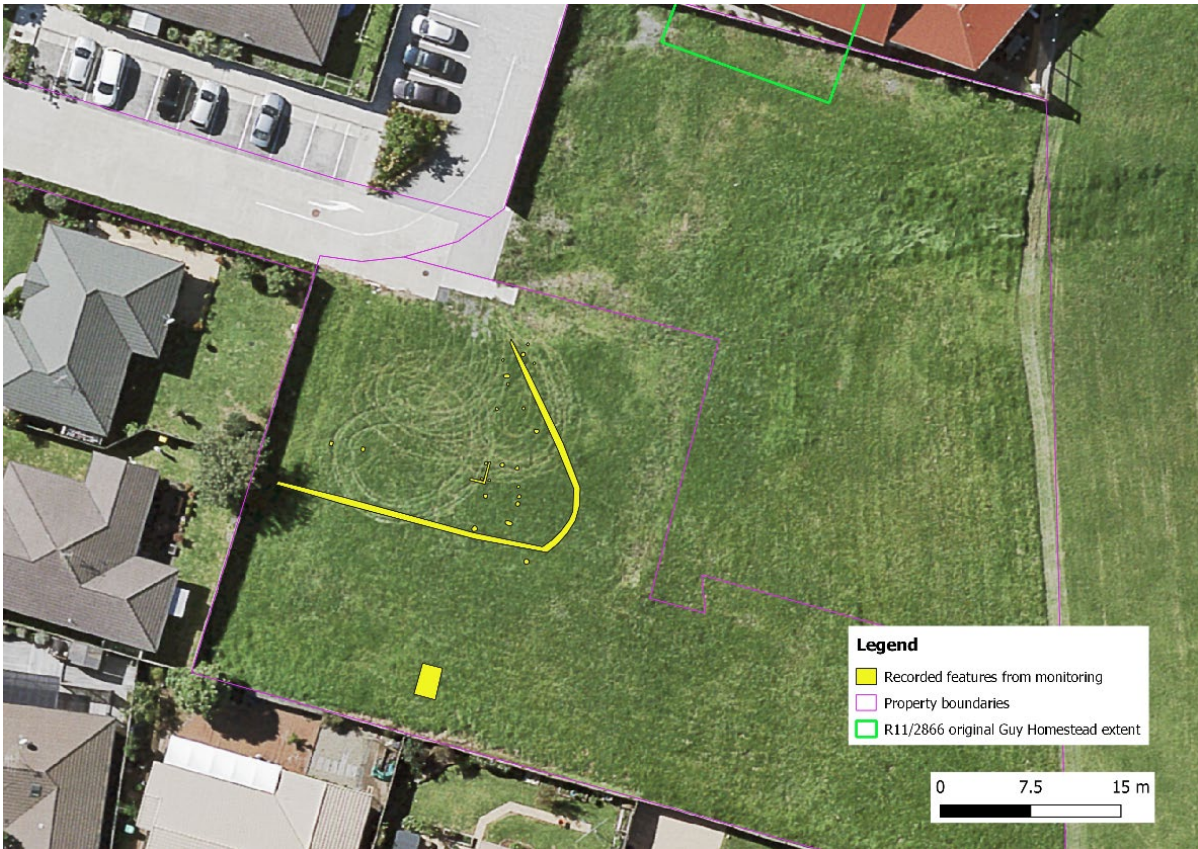


Figure 2. Map of properties at 47A and 47B Huntington Drive showing location of post-1900 features observed during monitoring of topsoil stripping over the entire area of the two properties.

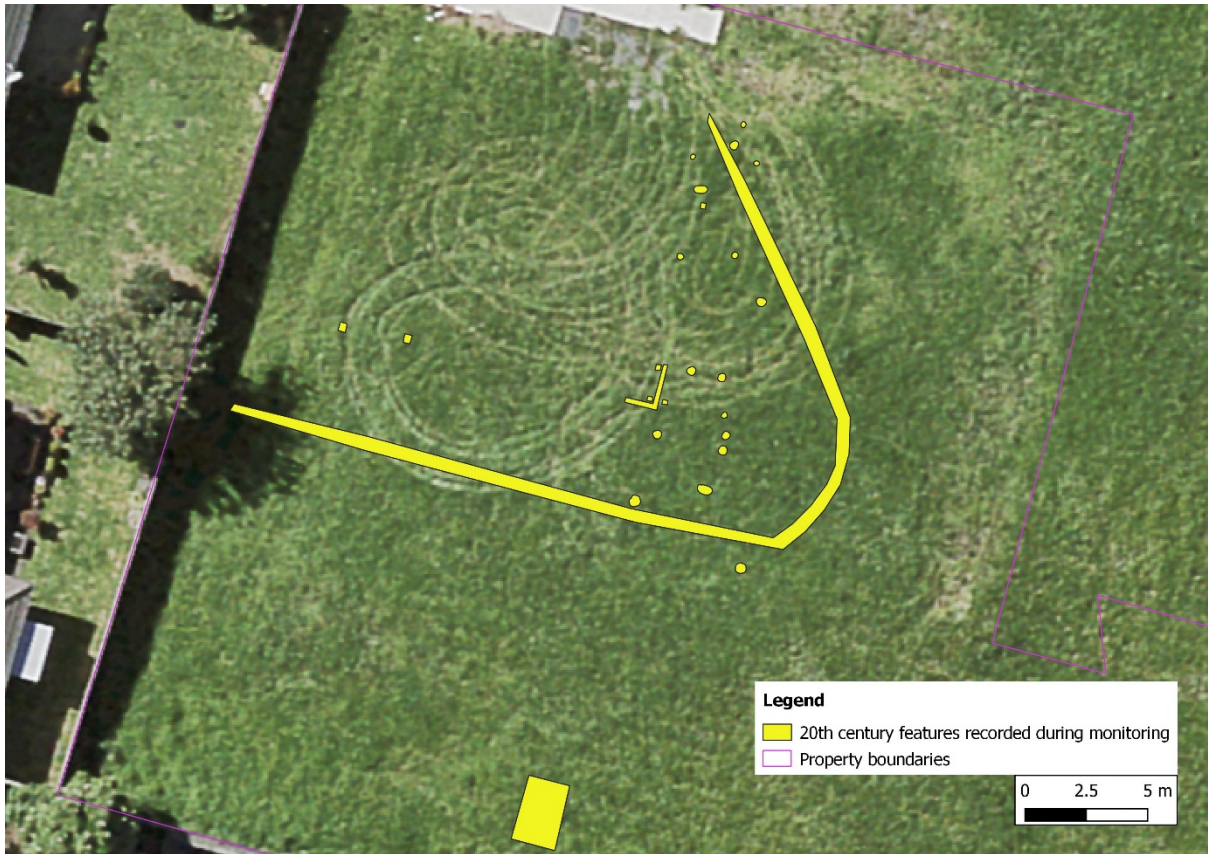


Figure 3. Detail of 47A Huntington Drive and the recorded post-1900 features observed during monitoring.



Figure 4. Area stripped to clay for wastewater drain for Units 7-22, showing post-holes below demolition layer.



Figure 5. Pit in south of building platform for Units 15-22 containing demolition material from farm buildings



Figure 6. Structure recorded in building platform for Units 15-22, most likely levelled during demolition of farm buildings



Figure 7. Intact post removed from post-hole in building platform for Units 15-22



Figure 8. 1921 bottle excavated from fill of post-hole and drain feature in building platform for Units 15-22



Figure 9. Cut and fill within drain feature for farm buildings that extended east to west across the building platform for Units 7-22 then turned north towards the new driveway